
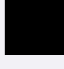



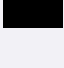


**Ar. Kashyap Shah**  
Architecture + Design Portfolio  
2021



# Content

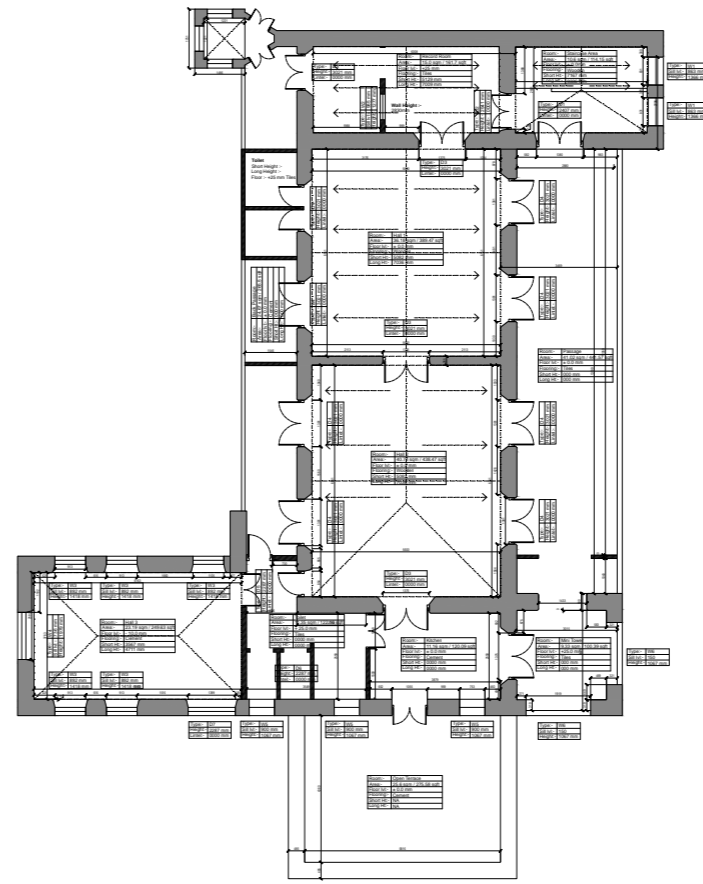
BDTA Pvt. Ltd.		○ Pg. 01-02	<b>01</b>
PT. Parindo Jaya OWS		○ Pg. 03-04	<b>02</b>
ICICI Prudential Office		○ Pg. 05-10	<b>03</b>
Apco Hotel		○ Pg. 11-14	<b>04</b>
Transit Oriented Development		○ Pg. 13-20	<b>05</b>
Heritage Preservation Centre		○ Pg. 21-24	<b>06</b>
Multi Facility Centre		○ Pg. 25-26	<b>07</b>
Community Centre		○ Pg. 27-28	<b>08</b>



Site Photos



Front Elevation



Existing First Floor Plan



Proposed First Floor Plan



Site Photos



Site Photos



Site Photos



Sketchup, Lumion



Sketchup, Lumion



Sketchup, Lumion

# BDTA Pvt. Ltd.

○ Type: Professional  
 ○ Location: Fort, Mumbai  
 ○ Status: Under Construction  
 ○ Date: November 2020  
 ○ Scope of Work: Designing as per the requirements and functionality of our client and make Architectural drawings, representation for execution.  
 ○ Firm: One:1 Designs

○ Type: Adaptive Reuse  
 ○ Area: 2500 Sq.Ft. (232 Sqm)  
 ○ Brief: To repair and restore the roof of the building as well repair and design first floor as guest house for the members of the organization

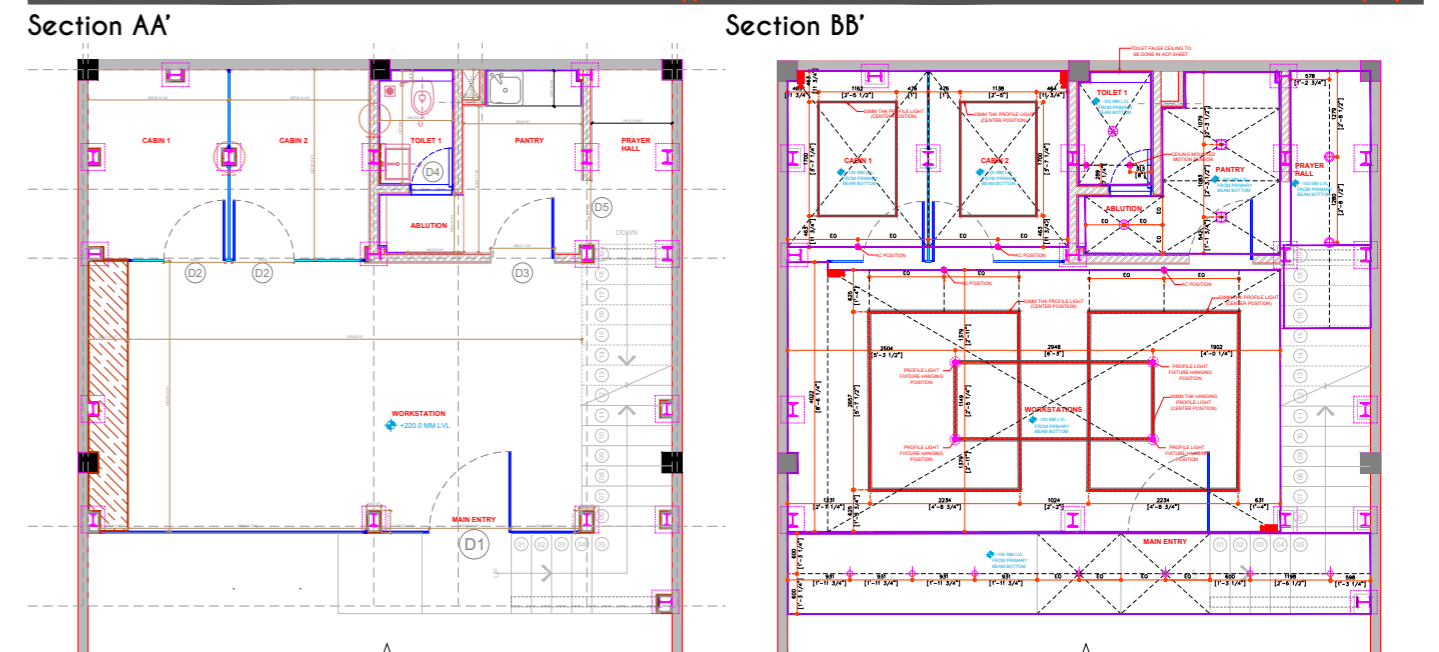
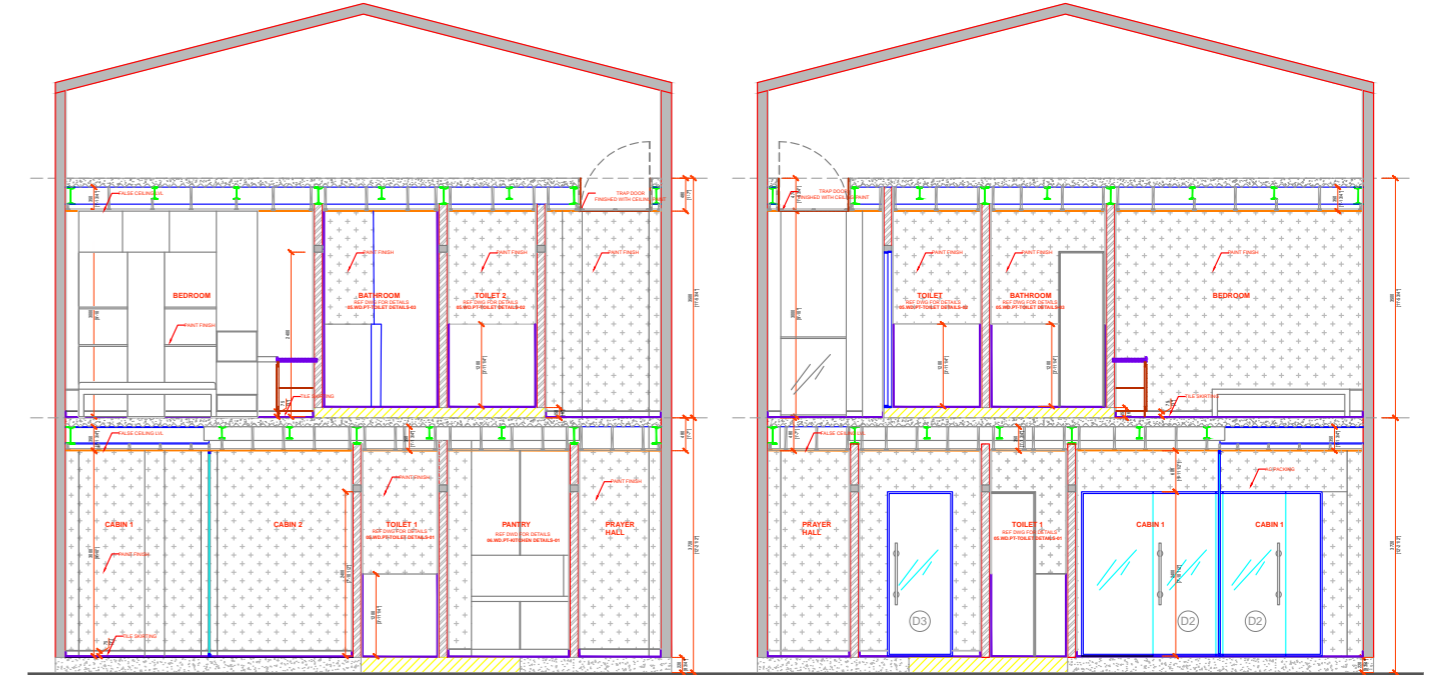
# PT. Parindo Jaya OWS

02 PT. Parindo Jaya OWS

- Type: Professional
- Location: Jakarta, Indonesia
- Status: Under Construction
- Date: January 2021
- Scope of Work: Designing as per the requirements and functionality of our client and make Architectural drawings, representation for constructing it.
- Firm: One:1 Designs

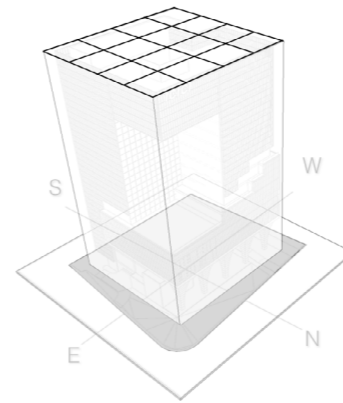
- Type: Commercial
- Area: 1500 Sq.Ft. (140 Sqm)
- Brief: To construct a 1 storey office in a Industrial warehouse with with all the functionality of a office space

02 PT. Parindo Jaya OWS

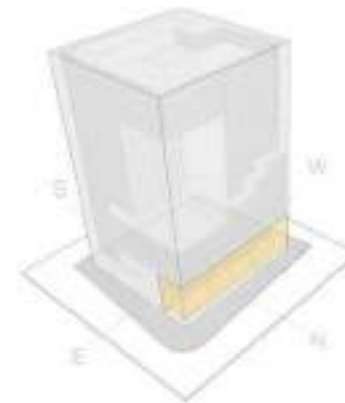




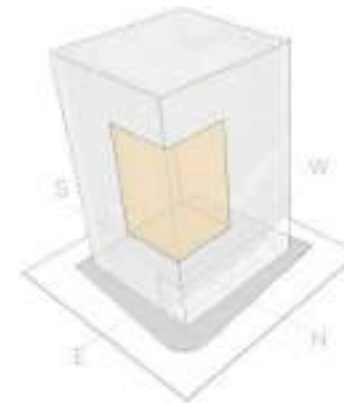
By 3D Visualizer



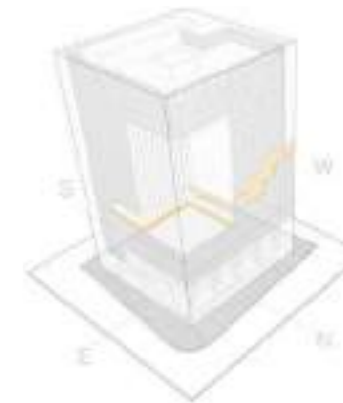
Extruding a strong square mass from the site and breaking it down to 4 X 4 grids.



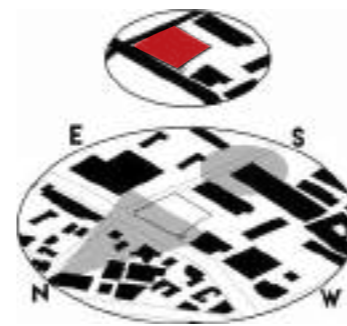
The opening on the North side blends the city's urban buildings with Nature engaging the occupants as well as passersby.



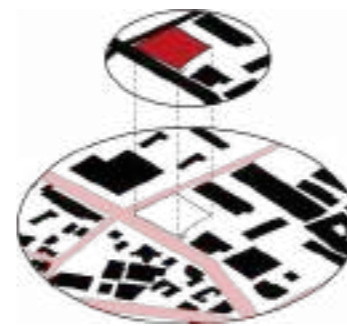
A shared courtyard is sculpted into the north-east corner of the structure.



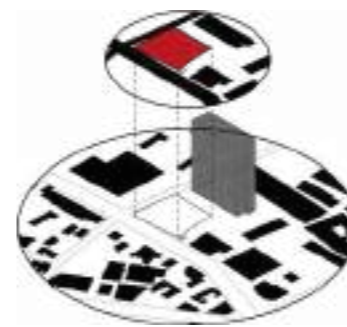
The open spaces, the sky court, the orientation is organized around a pattern which is inspired from the swastika.



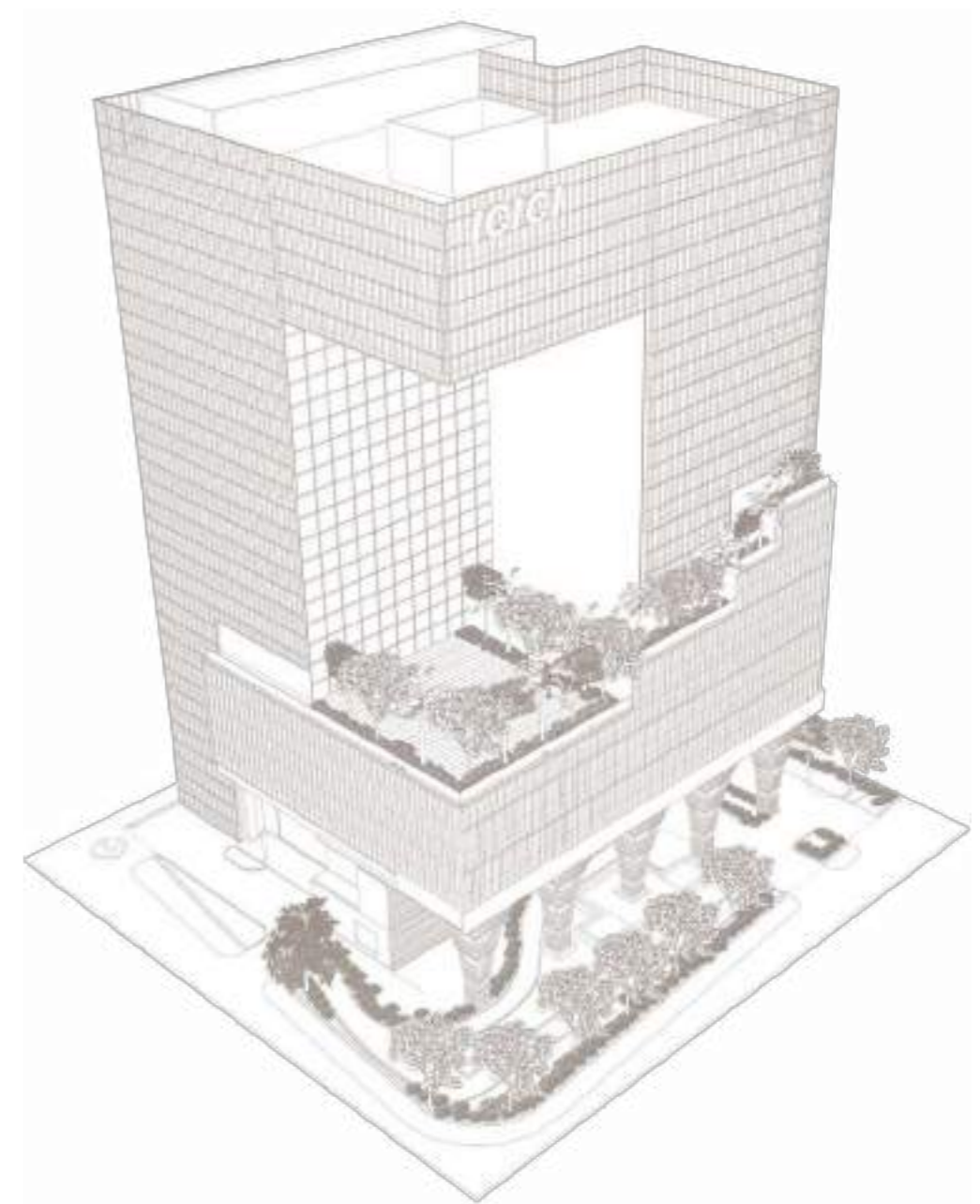
Our site is positioned at an intersection, which has a prominent view vista of its own and will act as a landmark.



The location is also ideal, as its north, east, and west faces have unobstructed view.



The South features a high-rise tower which would act as a perfect backdrop for any structure that stands right in front of it.



Being partial to traditional wisdom rather than technical expertise or glamorous materials, our design works seek tranquility as their primary experience. The structure is a purposefully designed building, that does not look like a Financial Institution, thus upending any notions of classicism, narrative, or historic context, which also gives back to its environment what it hinders with during its building process. With no tangible object to house, why constrain the architecture? The result is an open plan, natural light infused, purposefully undefined space that intermixes extemporaneous work spaces.

# ICICI Prudential Office

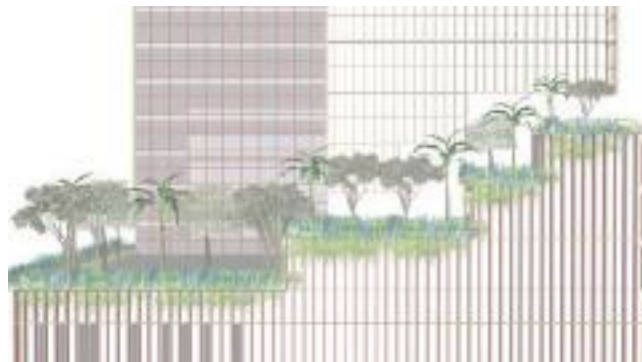
- Type: Professional
- Location: Prabhadevi, Mumbai.
- Status: Design Proposed
- Date: June 2019
- Contribution: Designing, Architectural Drawings, Representation and Client Interaction.
- Firm: Se-arch Architects, Ar. Kapil Bhalla



View 1 : Opening on the North



View 2 : Entrance



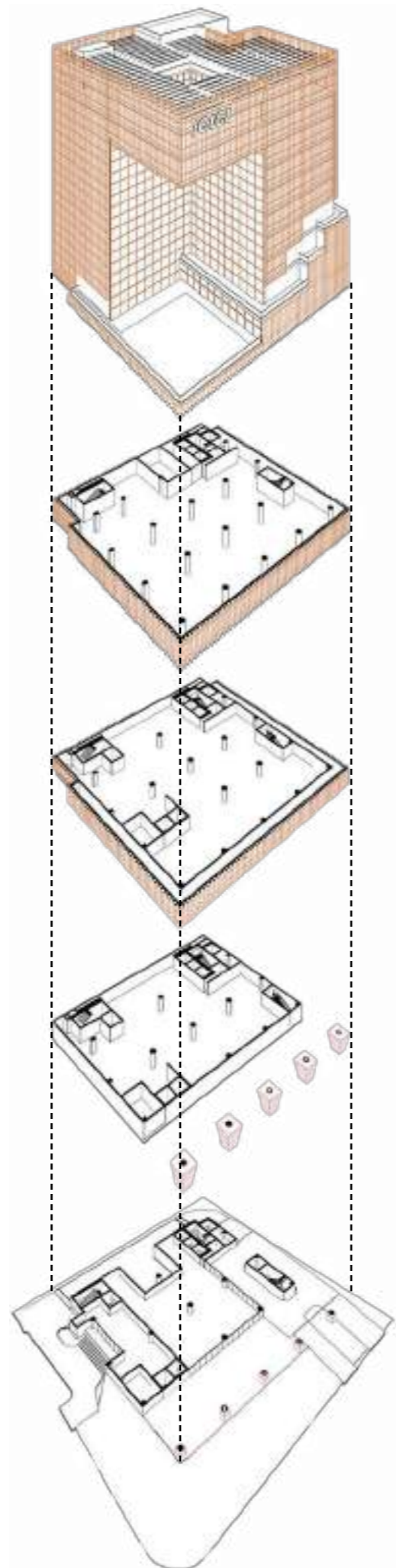
View 3 : Pocket Terraces



View 4 : Water Body



View 5 : Corner Atrium



**Office Space**

- 1.Lift Lobby
- 2.Office Space
- 3.Toilets
- 4.Service Lobby
- 5.Terrace Garden

**Public Space**

- 1.Lift Lobby
- 2.Public Hall
- 3.Toilets
- 4.Service Lobby
- 5.Store

**Ground Floor**

- 1.Entrance
- 2.Drop-Off
- 3.Office Lobby
- 4.Public Hall Entry
- 5.Reception
- 6.Service Lobby
- 7.Recreational Space



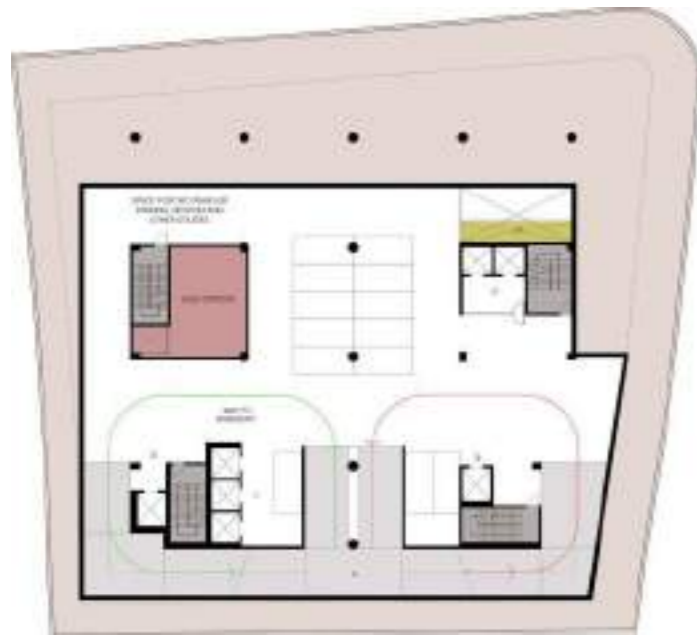
Ground Floor Plan



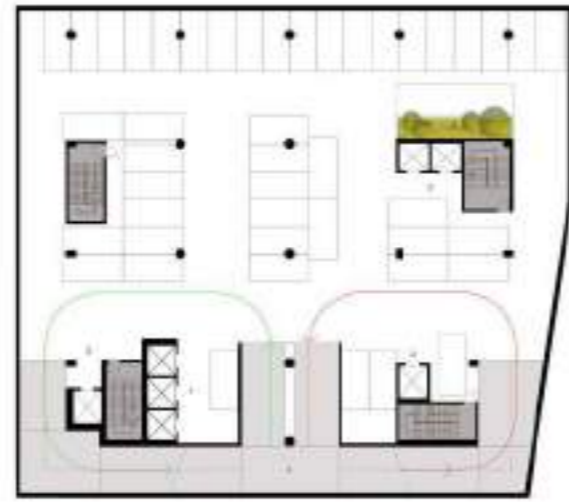
First Floor Plan



Office Typical Floor Plan



Lower Basement Plan



Typical Basement Plan

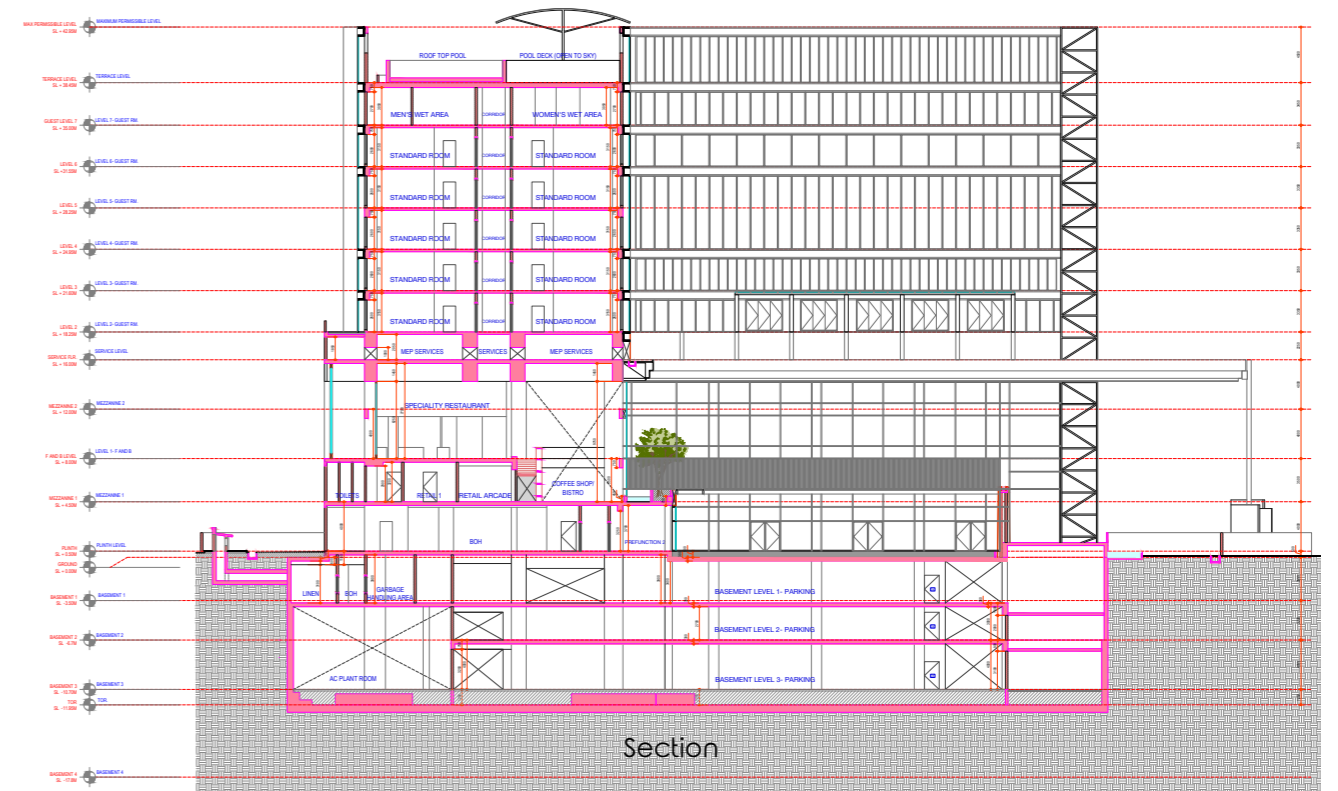
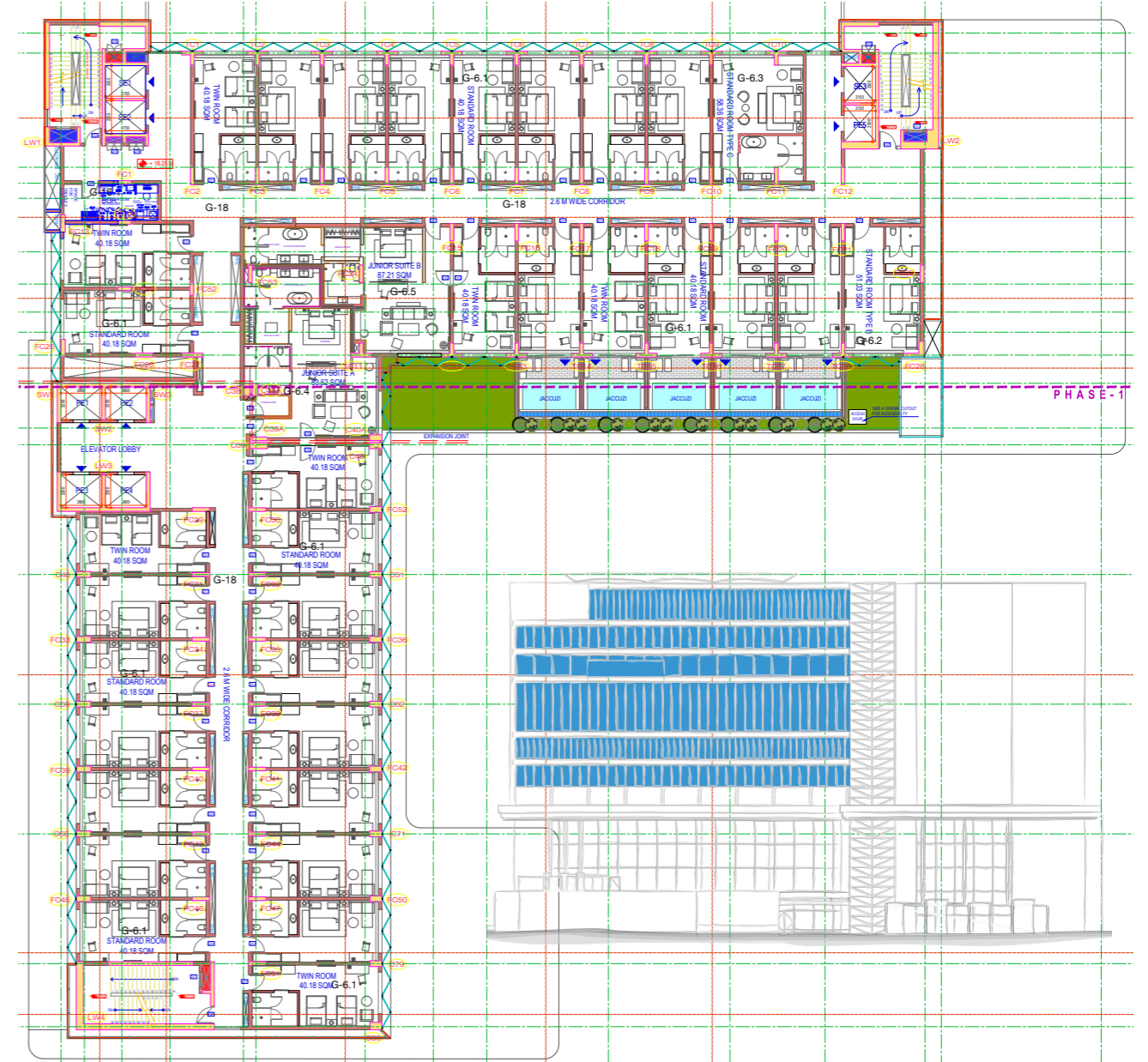
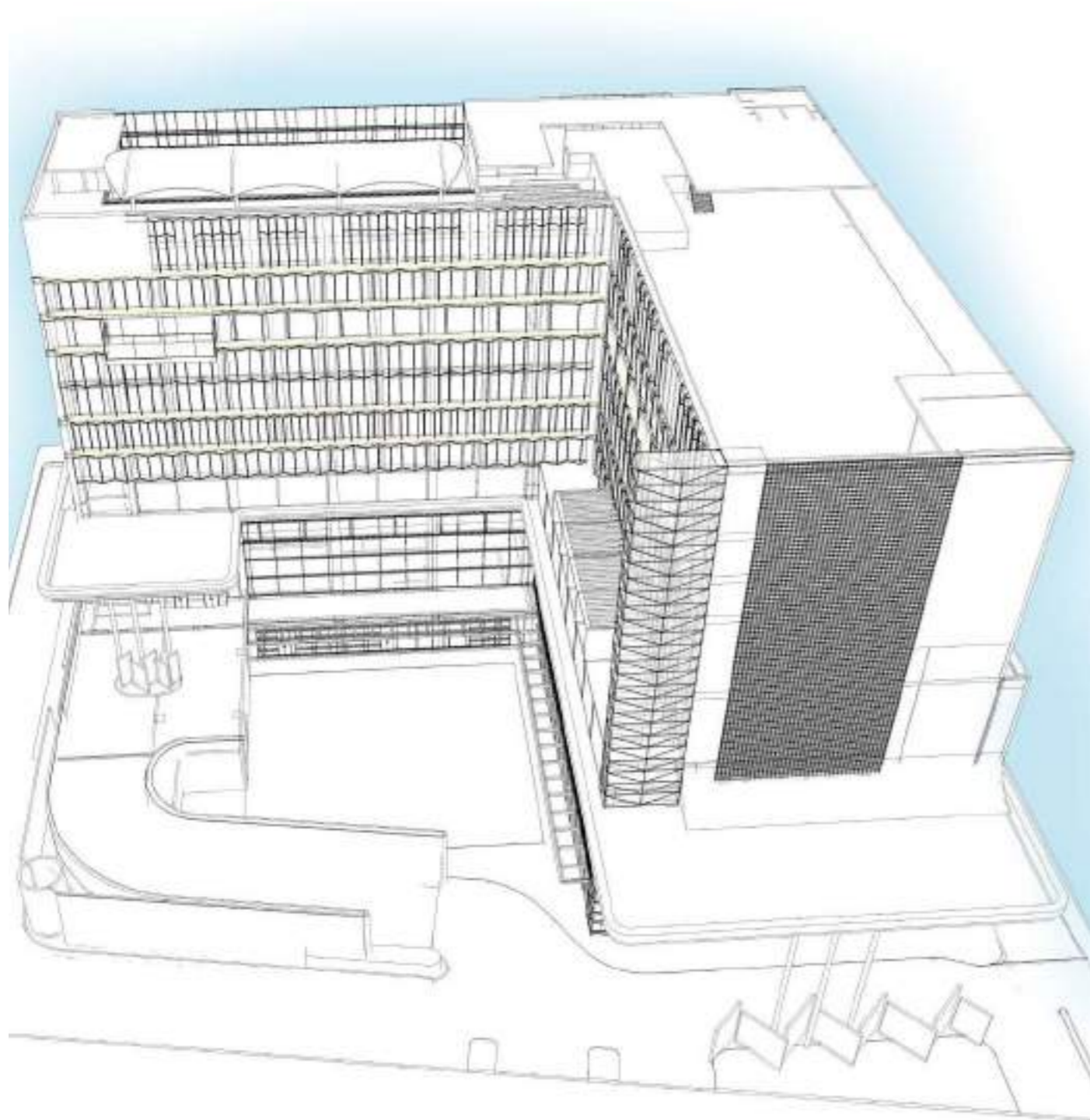


By 3D Visualizer



North Elevation

Section



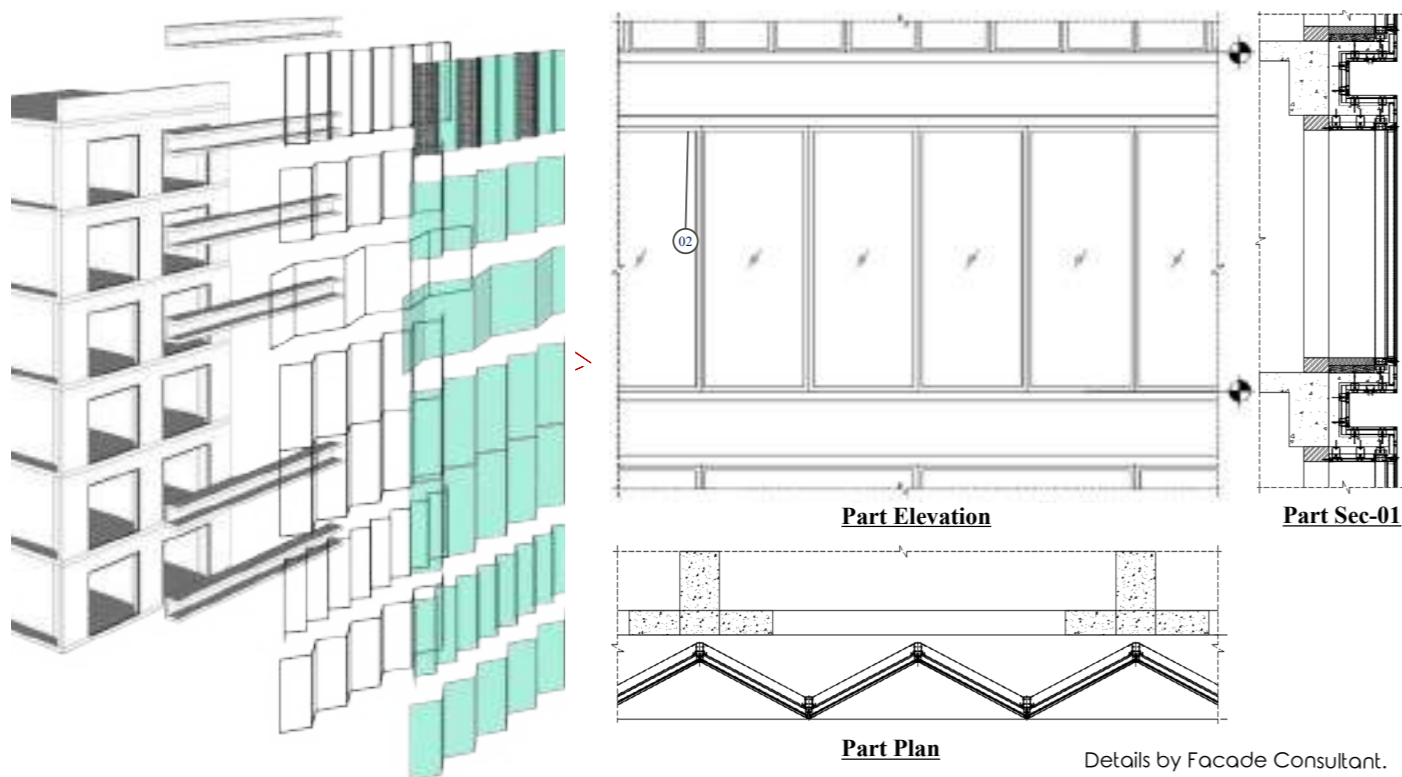
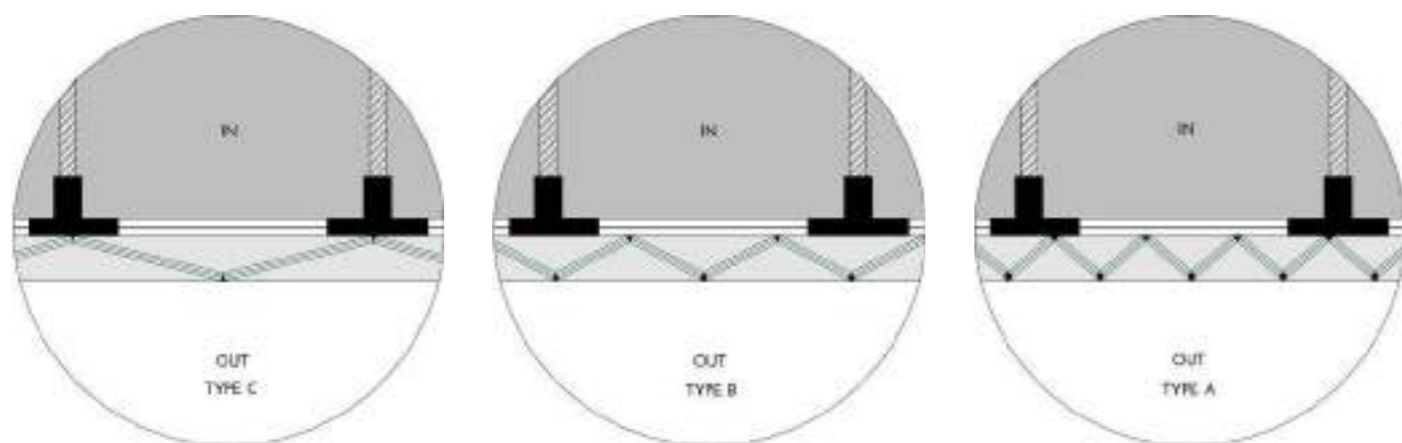
# Apco Hotel

- Type: Professional
- Location: Prabhadevi, Mumbai.
- Status: Under Construction
- Date: June 2019
- Contribution: Designing of Facade elevation with Architectural Drawings and Representation.
- Firm: Se-arch Architects, Ar. Kapil Bhalla





Day View



Details by Facade Consultant.

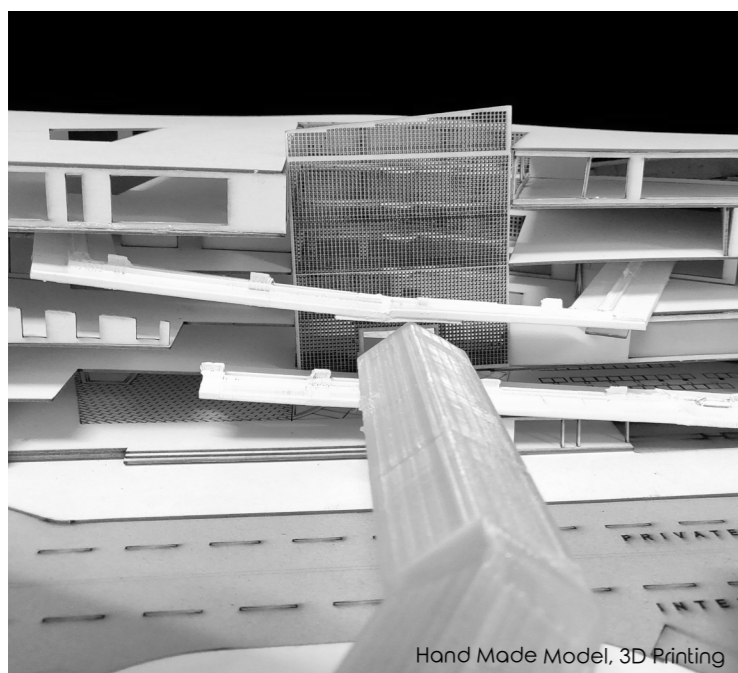
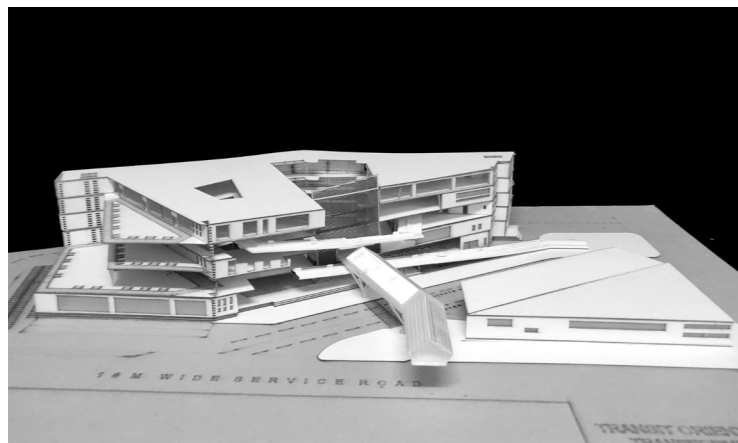
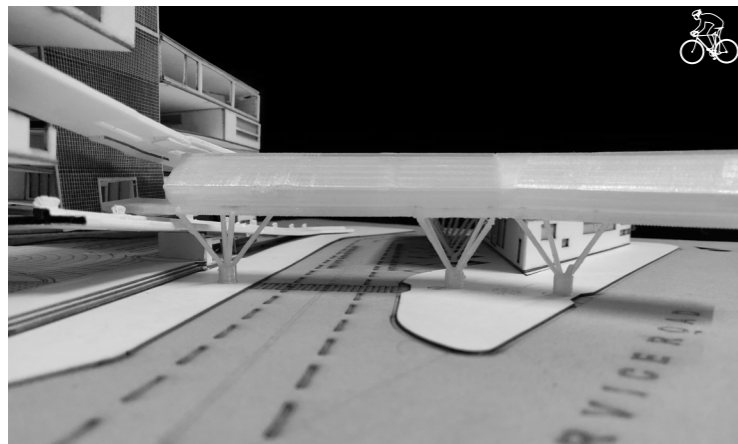
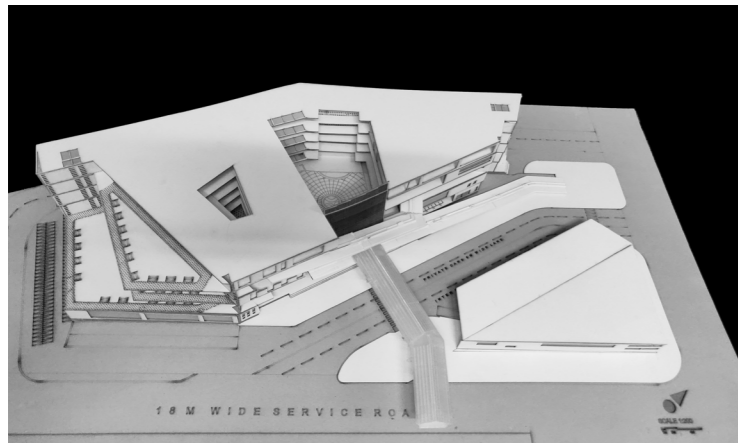


Evening View



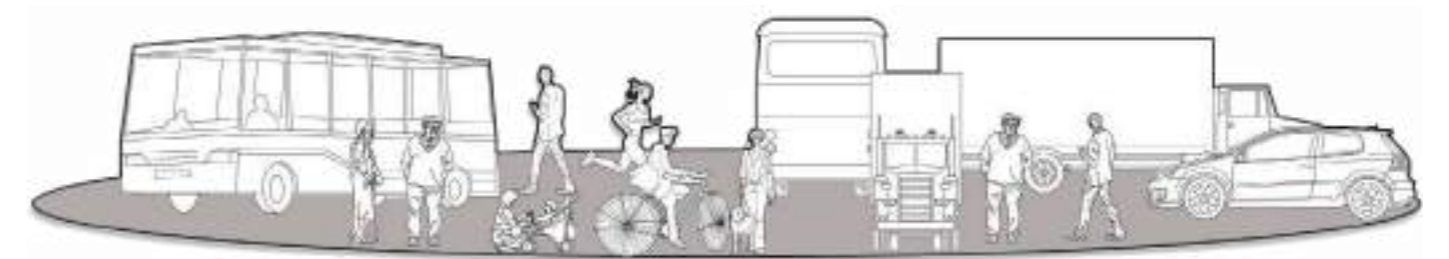
Night View

Revit Modeling, Enscape, Photoshop



# Transit Oriented Development

- Location: Dahisar East, Maharashtra, India.
- Brief: Exploring opportunities created by Transit stops and develop the area around it as well as transit stop itself, giving everyday commuters and people living around an excuse to stop and socialise while creating an expression of civic identity to boost local pride.
- Semester: 10 / 2019
- Mentor: Ar. Samir Hingoo  
Ar. Rita Nayak

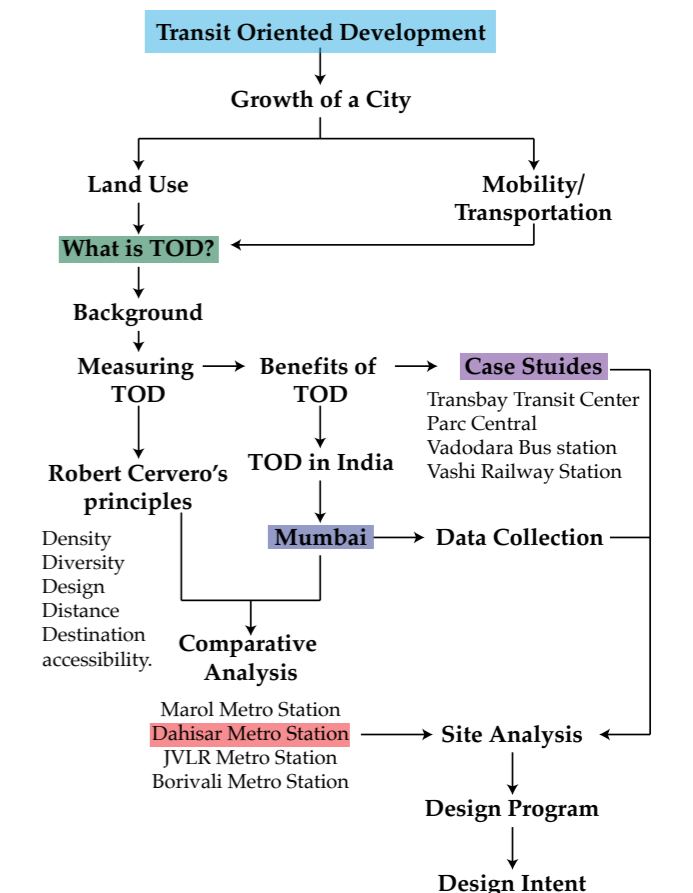
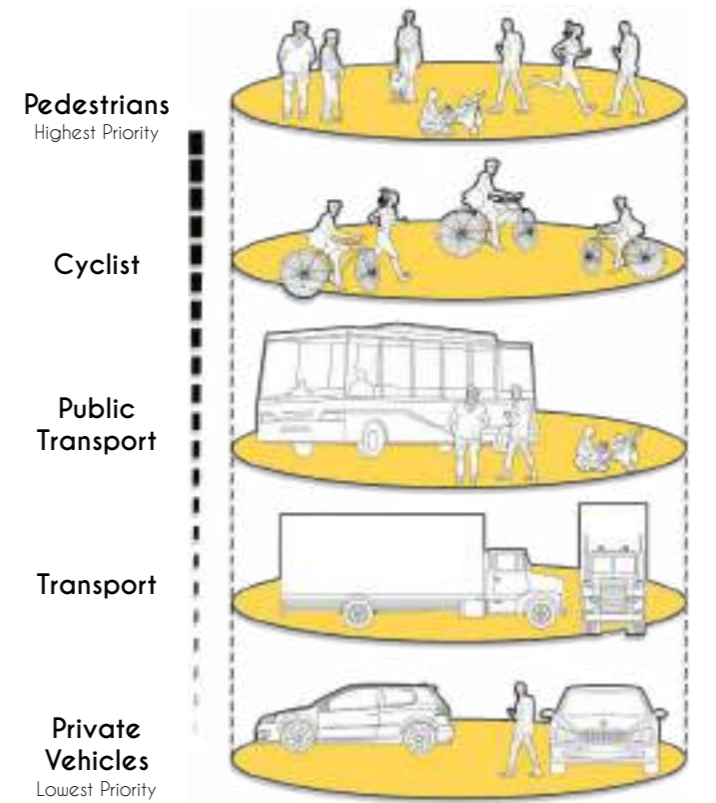


## Current Scenario

As Cities start to develop and urbanize, transportation or transit development plays a major role in it. In the process of development of a city many different challenges are faced, particularly in the transport sector. Technological advancement of transit systems is not the only solution, but also the planning and development in and around the transit at micro level. In the past few decades, Transit-Oriented Development (TOD) has emerged as a popular and an influential planning concept in many cities.

Transit Oriented Development presents unique opportunities for Indian cities to meet the challenges of rapid motorization, rising inequity, deteriorating quality of the urban realm and climate change. It is a crucial means of coordinating relatively intensive land uses and multiple transportation modes.

This project deals with the detailed aspects of how a city like Mumbai develops the need of TOD with it's increasing pace of urbanisation. It also concentrates on developing a prototype design module in which crucial means of using relatively intensive land uses and multi-modal transit hubs are incorporated.



Hand Made Model, 3D Printing



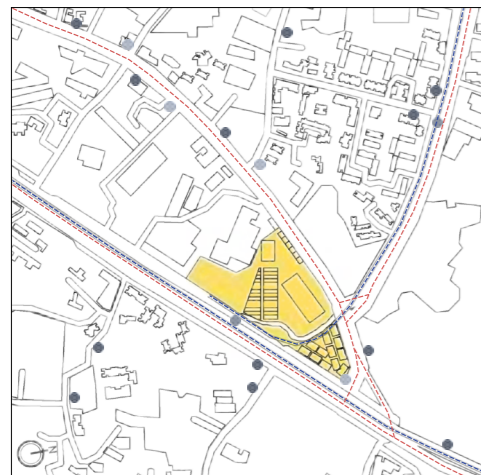
Traffic Analysis



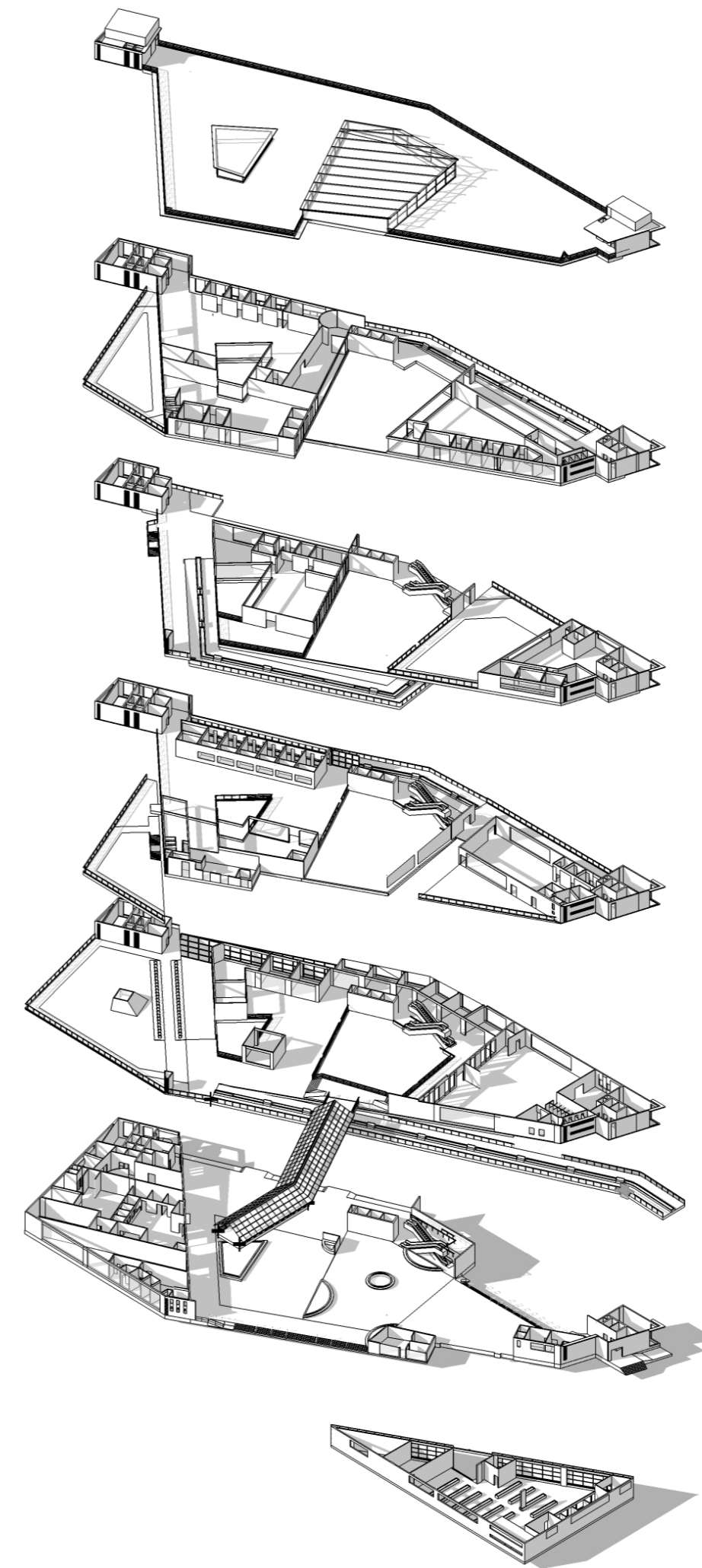
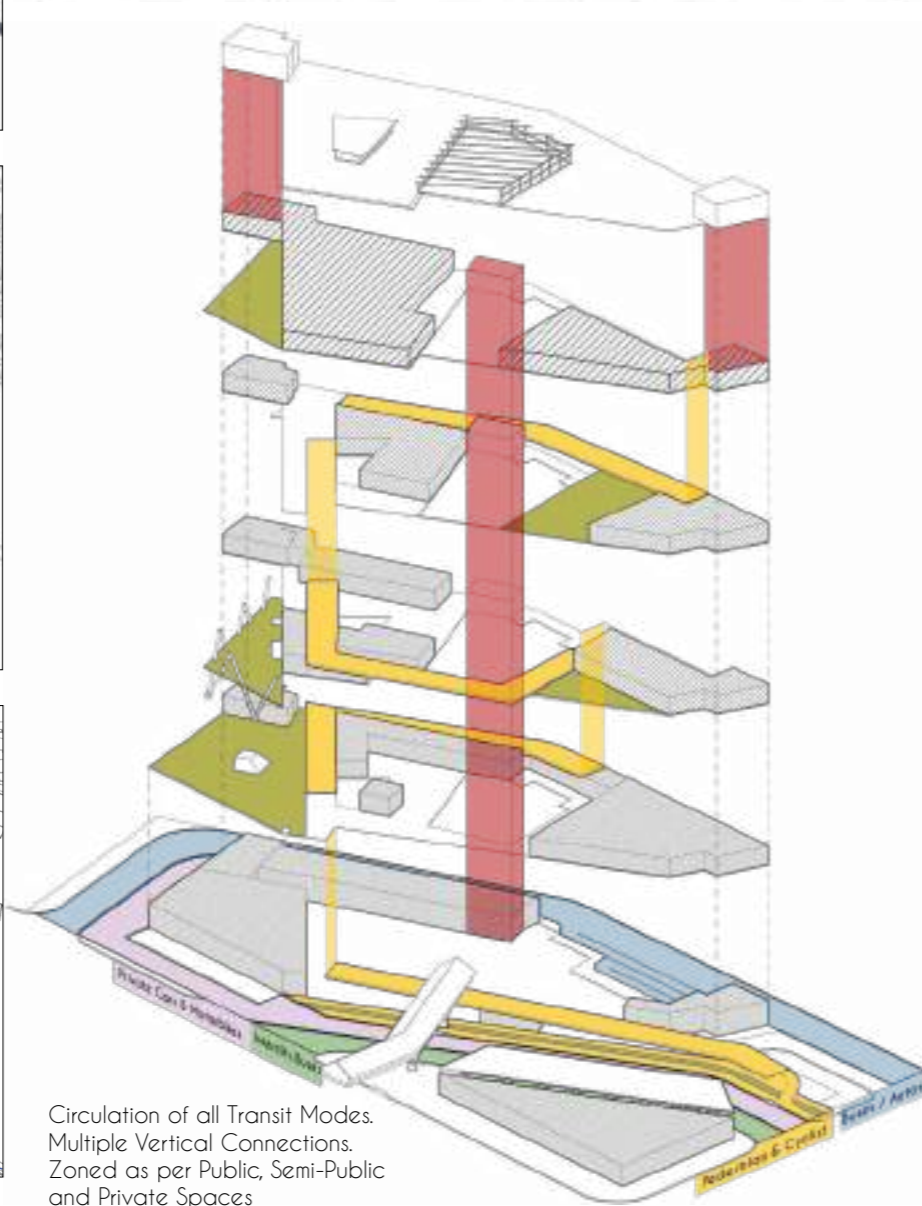
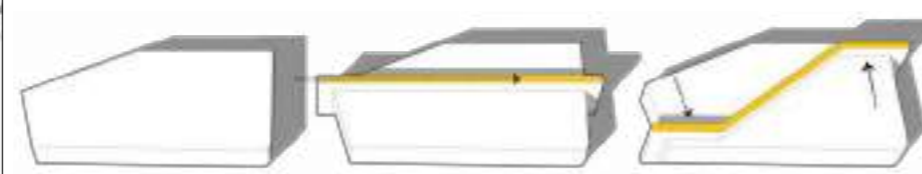
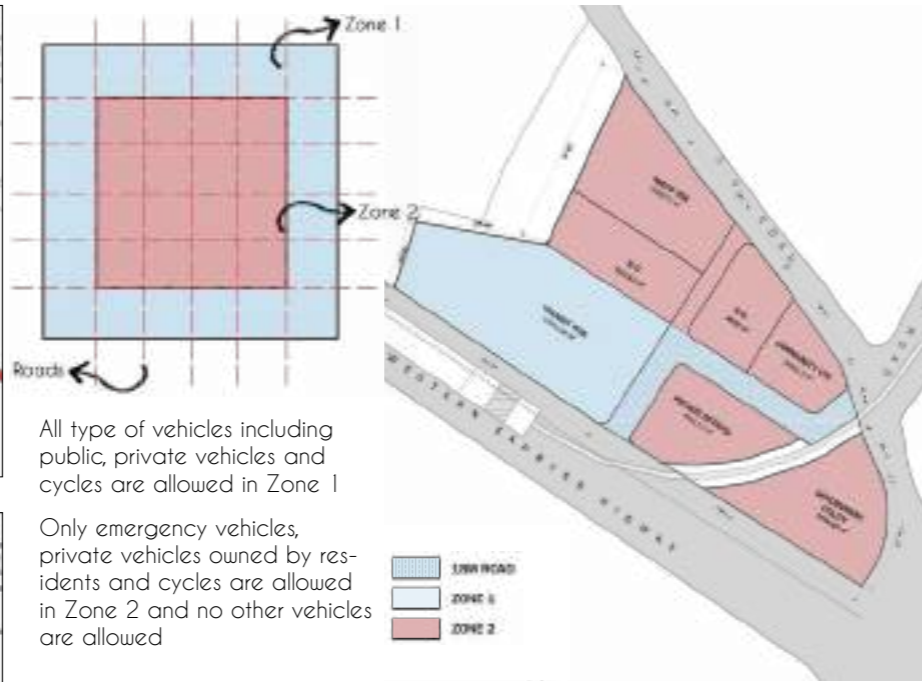
Road Network



Metro Lines



Transit Nodes



**+ Roof**

The roof level covers the two atriums with glass allowing maximum natural light inside the structure.

**+ Fourth Floor**

The fourth level is programed for only building occupants. It contains spaces for co-working offices and private offices for rent with semi open space as a spill out zone and bike parking for occupants coming via ramp.

**+ Third Floor**

The third level is programed for visitors and building occupants. It contains spaces for public library and gymnasium with semi open space as spill out zone.

**+ Second Floor**

The second level is programed for visitors and building occupants. It contains spaces for food court and banquet hall while still connected to the ramp.

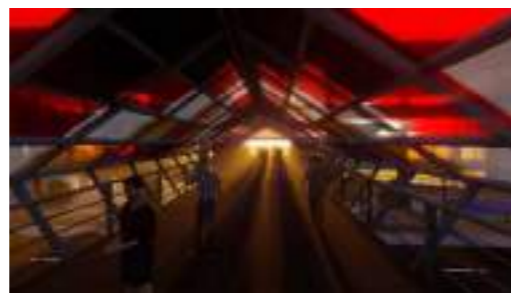
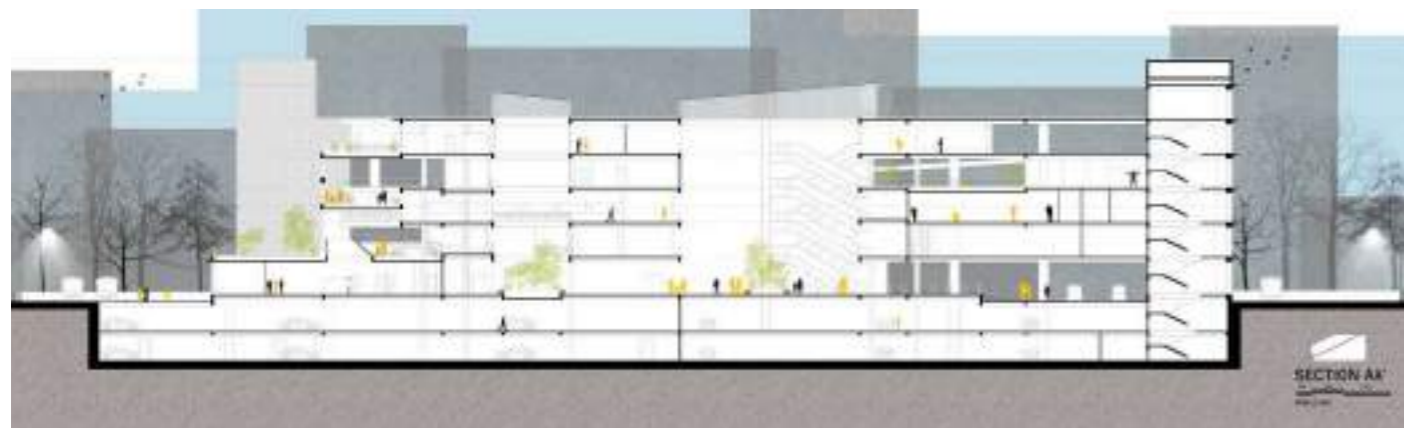
**+ First Floor**

The first level is programed for both commuters and building occupants. Directly connected to Metro station. It contains spaces for Bike parking, convenient shopping and Hypermarket for daily commuters.

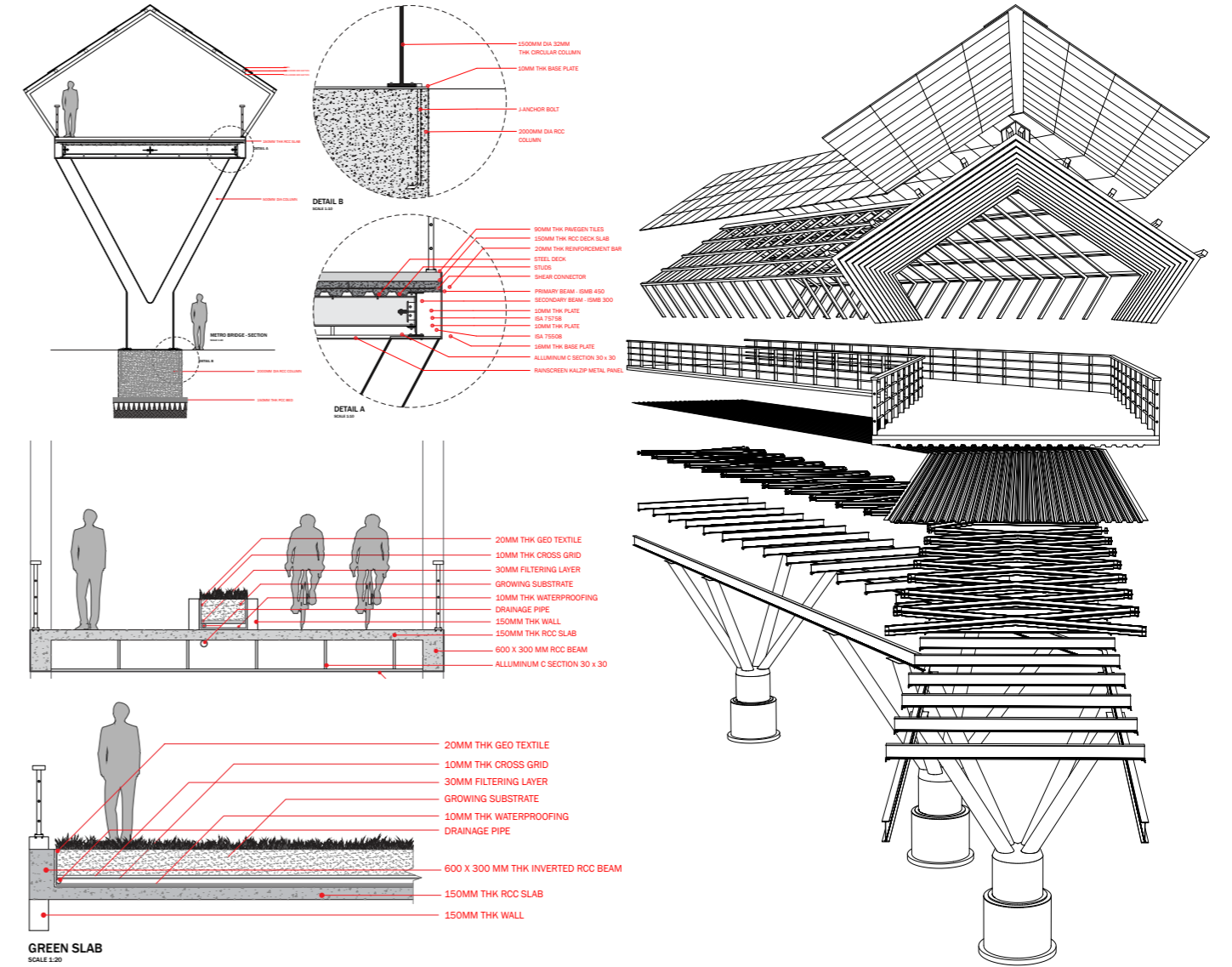
**Ground Floor**

The ground level is programed for both commuters and building occupants consisting of major transit connections. It contains spaces for Bike parking, Hawkers, Bank, Public toilets and Intercity Bus Station. A Ramp exclusive for pedestrians and cyclists creates a major vertical connection

05 Transit Oriented Development



05 Transit Oriented Development



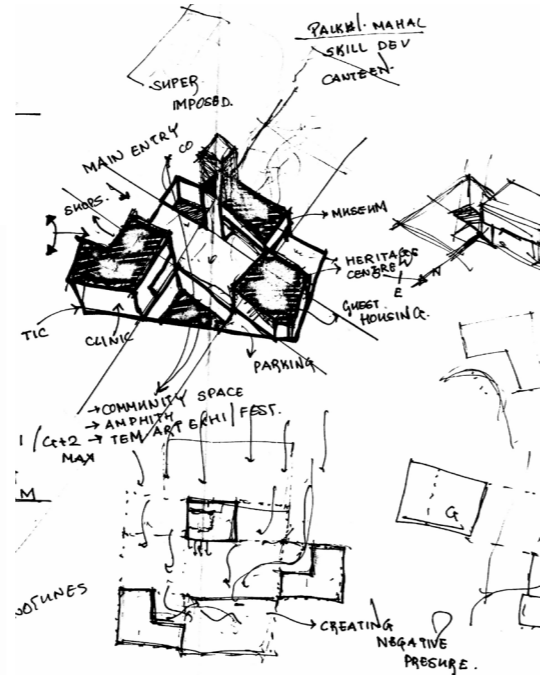


# Heritage Preservation Centre

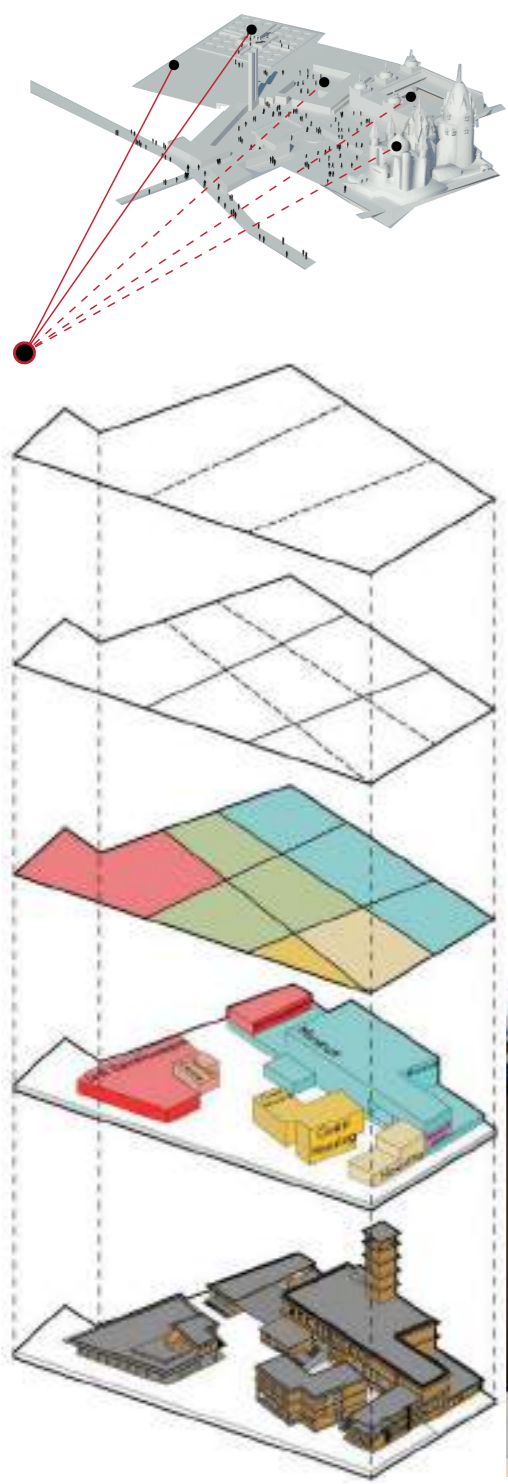
- Location: Orchha Complex, Madhya Pradesh, India.
- Brief: A design solution essentially with a deeper understanding of heritage potential and optimum usage of spaces for a growing small town with daily conflicts between the spaces trapped and identities lost; with obscure interfaces and diminishing characters, Involving study of growing population due to migration, The need for availability of sources of income or employment, The interconnectivity and Infrastructure of a city.
- Semester: 6 / 2016
- Mentor: Ar. Renuka Kale



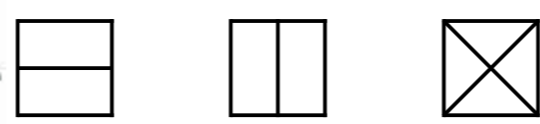
Orchha being rich in heritage has 129 declared heritage sites, including architectural heritage, natural heritage, traditional heritage creates high quality public and social space for the town tourism and recreational development to keep Orchha on the international map of tourism while still retaining its unique cultural characteristics Orchha fort being most important among it.



2021  
Architecture Portfolio  
Kashyap Shah  
23



**Sawan Bhado** named after spring months are cooling units for wind and ventilation and also subterranean structure for retreat of Orchha king.



**Wind Tower** is a traditional Persian architectural element to create natural ventilation inside a structure. Wind tower can be divided in 1,4,8 parts from inside according to air flow.



SketchUp, Lumion, Photoshop



SketchUp, Lumion, Photoshop



SketchUp, V-Ray, Photoshop

2021  
Architecture Portfolio  
Kashyap Shah  
24

# Multi Facility Centre

- Location: Dhanukarwadi, Kandivali West, Mumbai, Maharashtra, India.
- Brief: Mumbai has a linear growth corridor. All the stations on the western and central line are along the main roads which act as the main arteries of the city along with highways. All the stations are at a close proximity of the main roads. The studio objectives are to explore the ideation of an architectural intervention of different uses and identifying the use of appropriate form for given function in the background of dense urban area of proposed metro station.
- Semester: 5 / 2016
- Mentor: Ar. Shishir Saawant



Auto Cad, Google Sketchup, V-Ray, Photoshop

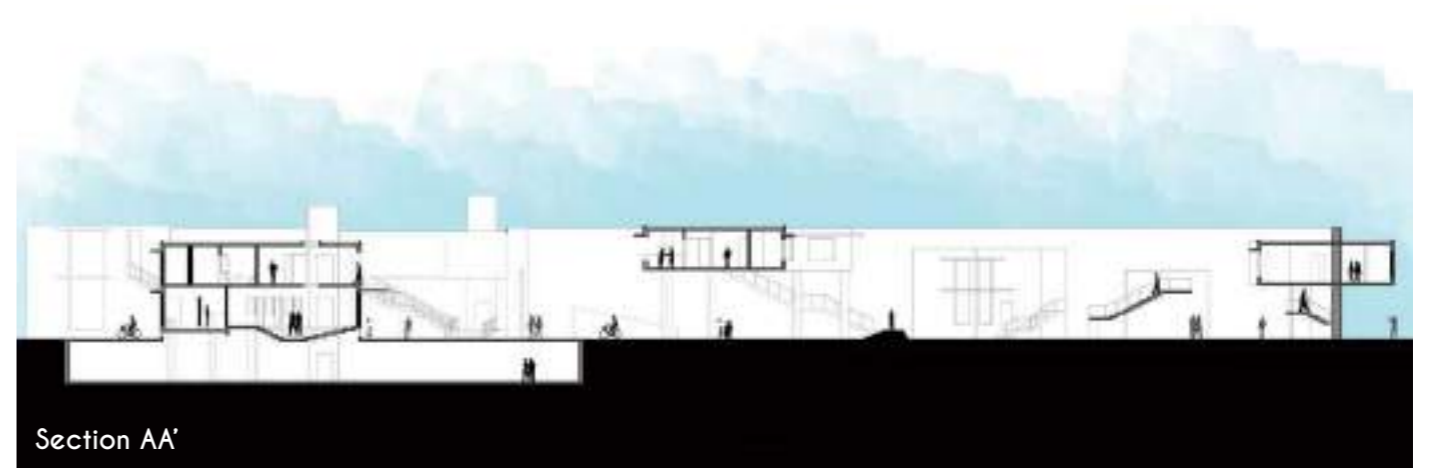


### PROPOSED SITE

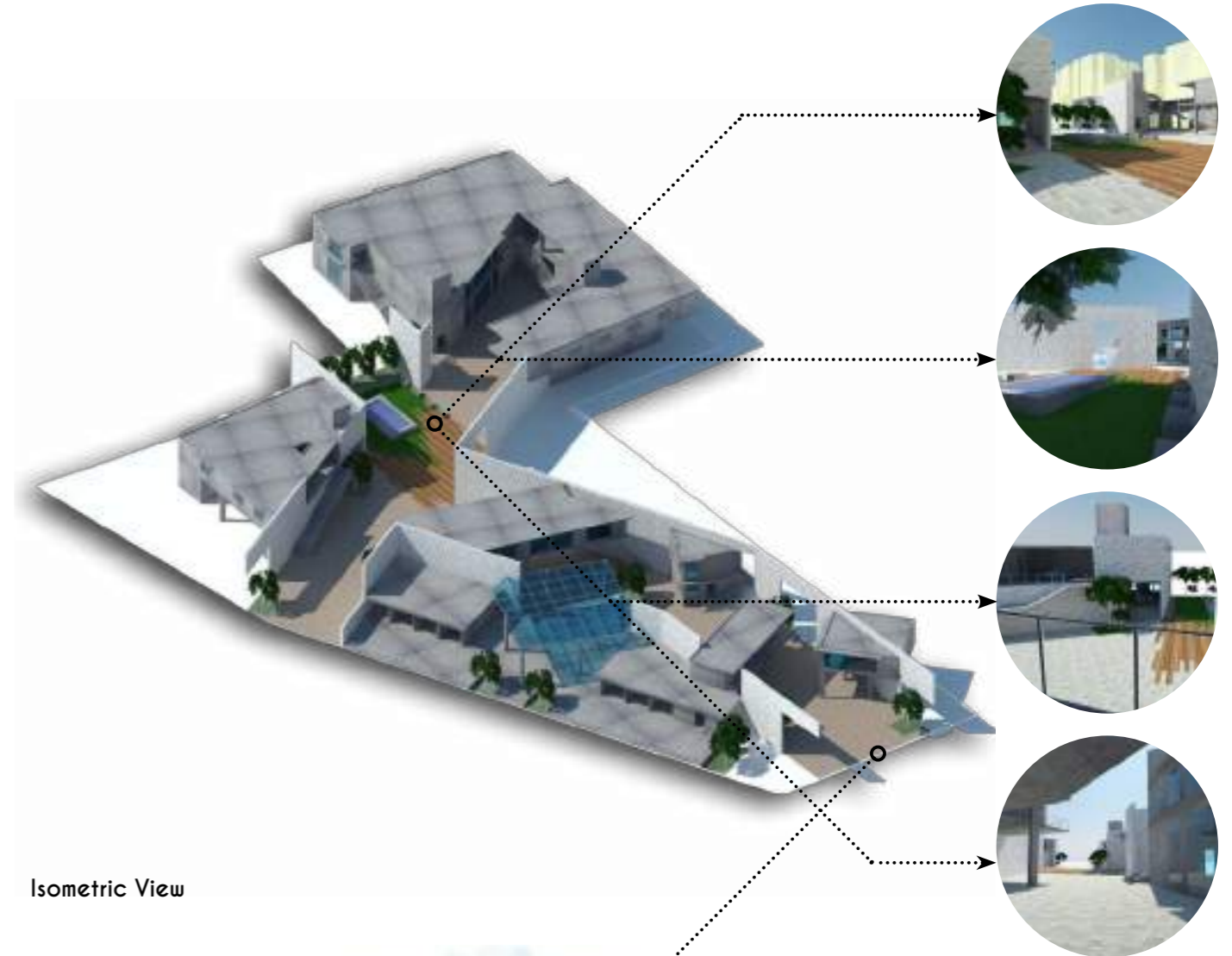
Site is adjacent to metro 2 exit being a junction demands the need for a multi-facility hub near by.



**Junction** where two paths intersect; Junction nowadays in Mumbai means traffic and chaos. Incorporating Junction in my design for people as a community space gives a new meaning to it. Considering the future development there would be a major change in skyline. Breaking the sky line will create interest for the user but doing something bizarre or dynamic will loose interest making it disturbing to see it everyday.



Section AA'



Isometric View

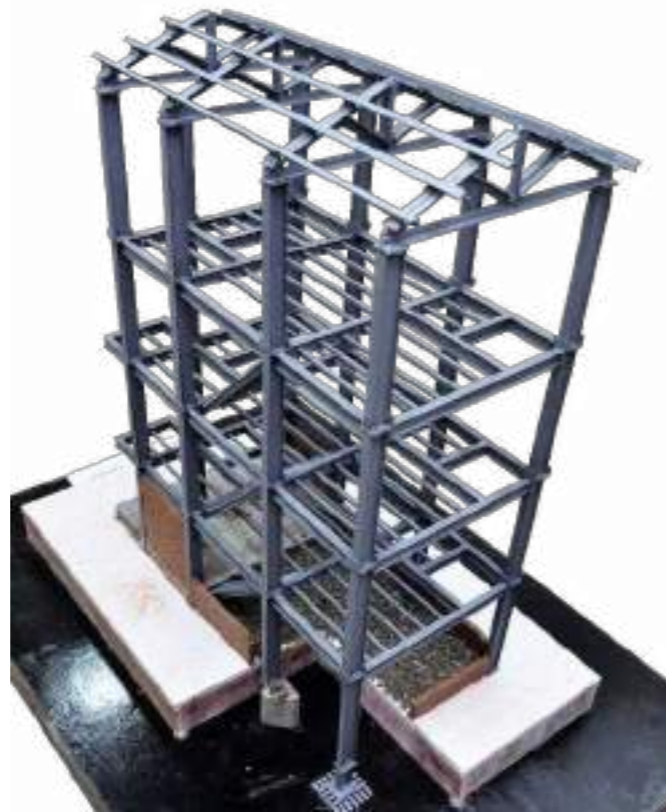


Elevation

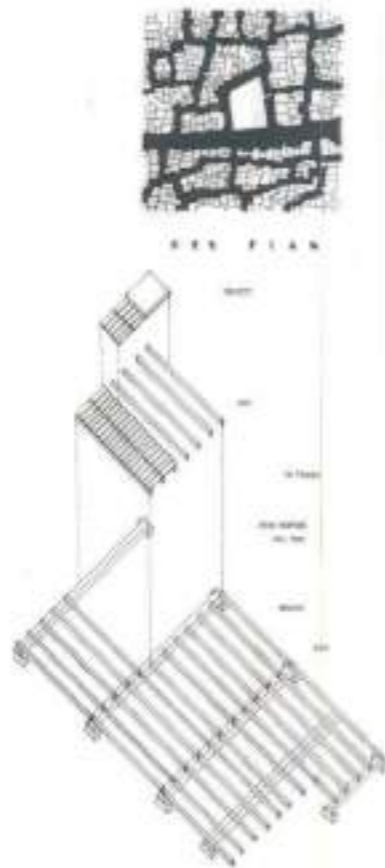
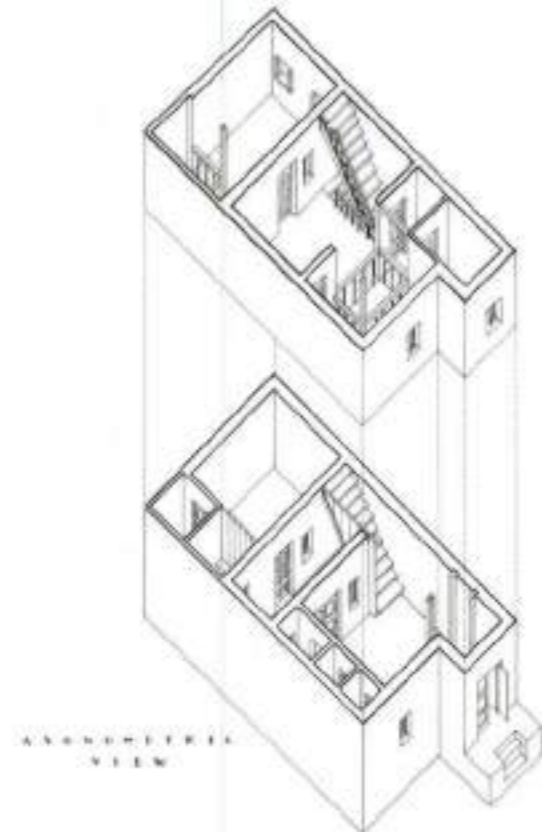
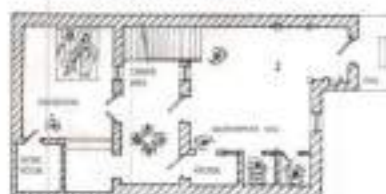
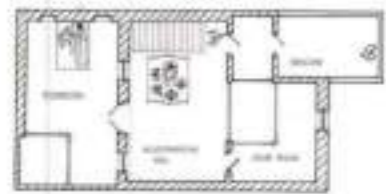
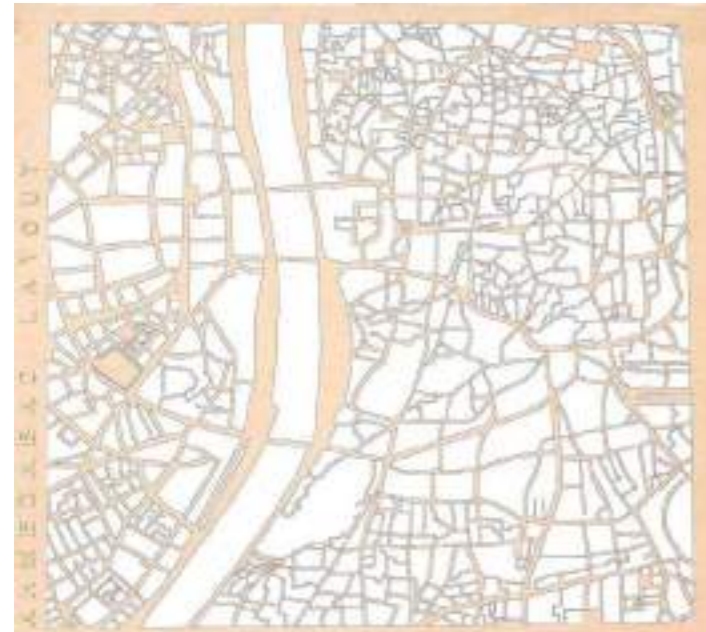
Auto Cad, Sketchup, V-Ray, Photoshop

# Community Centre

- Location: Haja patel ni pol, Ahmedabad, Gujarat, India.
- Brief: Pals are rapidly changing becoming very urbanised, congested with traffic, fast paced and very hectic. The essence of social life is reducing everyday. The vision is to offer a space to the pol community which can help people come together, space which can be used for health care, display their talents, help women run small business; showcasing 'An Architecture for the People, based on their Socio - culture Fabric.'
- Semester: 4 / 2015
- Mentor: Ar. Smit Gogaria



Co-operating all pol characteristics like Chowk, Oatla, Terraces, Linearity, Cluster of Houses and Self Shading and making is accessible to everyone at different levels including differently able peoples. Ramp here functions as a connecting bridge which links every program and visually helps to divide and connect the open spaces and cluster spaces acting as main junction for social interaction.





**Ar. Kashyap Shah**

+91 9167583366

kashyap.n.shah@gmail.com